

Chief Executive Officer: Mrs Alison Nettleship
Head of School: Mrs Rachel Dinnis
Assistant Head of School: Mr Simon Wilkins



Weston Mill Community Primary Academy
Ferndale Road
Camel's Head
Plymouth
PL2 2EL

01752 365250

Westonmill.desk@discoverymat.co.uk



Newsletter 21st Jan 2022

We have had another busy week in school, with lots of active learning, focusing on our STEM skills. The nurses were also in to administer the nasal flu vaccines on Thursday. If you missed this, please contact your local GP to get your child booked in.

Hadid class shared their learning during our celebration assembly today, which focused on their work last term. This included wonderful art work, Power Point presentations and diary entries. They really enjoyed presenting their work to the rest of the school. This will be shared with the parents of Hadid class via the children's Teams account. They were fabulous, thank you Hadid class!

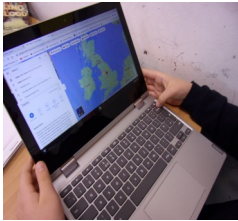
In Our Classes This Week:



The **foundation and nursery** children have been observing the signs of winter this week. On Monday the playground was covered in frost and they found large pieces of ice in the play equipment where the rain had frozen overnight. The children have observed the melting process and could think of lots of different ways to describe how ice felt. This week the children in Carle class have had loads of fun in PE. We talked about penguins; where they live, what they look like etc., then used the musical instruments to move in different ways, just like penguins, as we listened to the different sounds. We pretended to swim, we huddled together and pretended the mats were ice bungs. We pretended the ice was slippery, walked like a penguin, jumped out of the water on to an ice burg when a whale was coming and then tried to balance a small ball on our feet like an egg. We have also been learning our shapes in math's and putting Fred frog in some funny places to practice our positional language.

In **Mondrian** class this week, we have been planning and writing our stories based on our book "The Great Explorer". In Math's, our Year 1 children have been practising making numbers up to 50 (sometimes beyond 50!) using different equipment. Our Year 2 children have continued with multiplication and practised doubles and their 2's time-tables. Finally, we have been enjoying practising our moves in dance!





Year 5 have been using their inquiry skills this week to discover more about Viking settlements in Britain. They have been using Google Maps and Earth to find towns that have -by, -thorpe or -toft in the name to identify places that the Vikings settled and named.



This week, **Year 6** took part in a range of drama activities within their English lesson to help them understand the thoughts and feelings of the characters in their class story 'Far From Home' by Berlie Doherty. They created a conscience alley where they portrayed the complexity of the tough decisions the lead characters make during a significant chapter. They also created short pieces of drama including freeze frames and short monologues to explore a character of their choice. Finally, they took part in a hot seating activity where they asked open questions to delve deeper into the personalities of each character and the emotions they experience throughout the story.



ATTENDANCE FOR THE WEEK 17th—21st JANUARY 2022

Well done to this weeks winning classes: Goldsworthy & Kahlo

It is our aim for children to be in school at least **96%** of the time



GOLDSWORTHY	91.46
MATISSE	86.64
MONDRIAN	88.58
KIELY	91.92
KAHLO	96.19
DA VINCI	85.11

MONET	95.36
PICASSO	96.15
GAUDI	94.64
HADID	91.90
HOCKNEY	87.89



Foundation, Year 1 and Year 2
parents are invited to attend our
Read Write Inc parent workshop.

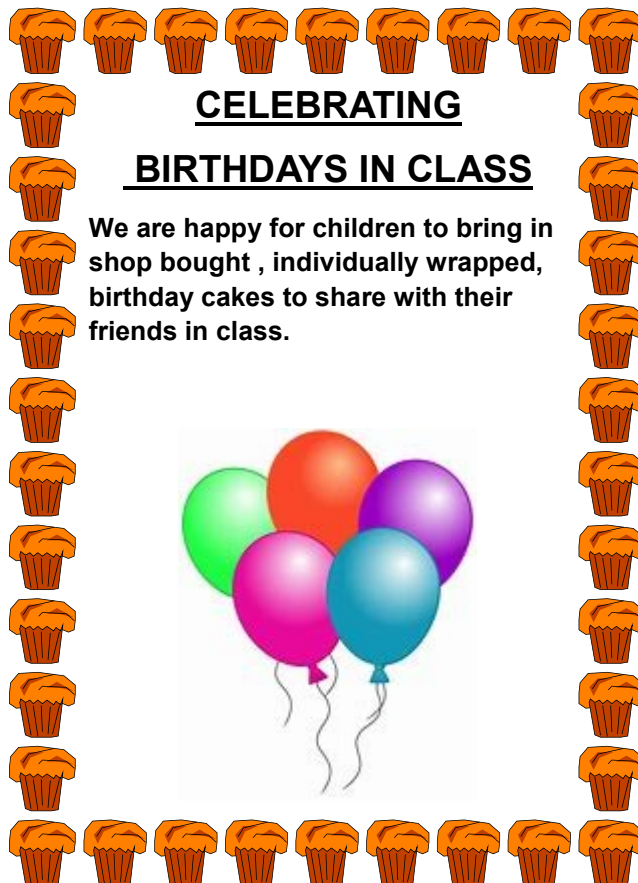
This will be an opportunity to learn
about early reading skills and how we
use Read Write Inc to support this at
Weston Mill.

Join via Teams on Tuesday 1st
February at 1pm - an invite link will
be sent via Parent Pay.

A recorded version of the session will also be
available to access on Tapestry.



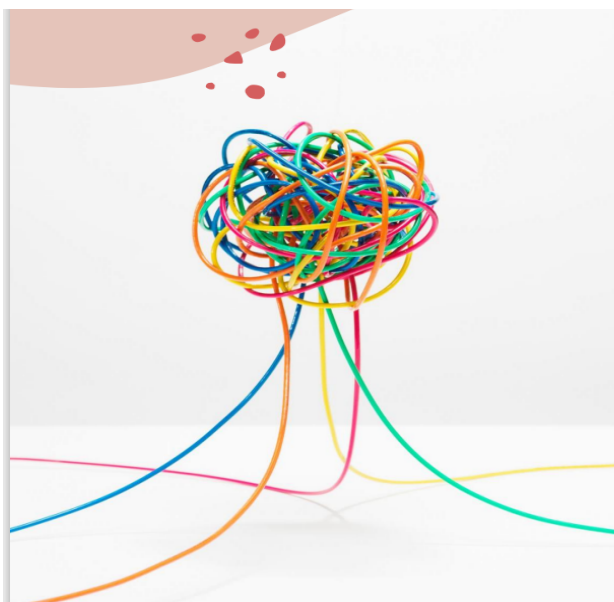
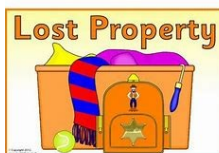
The session will be hosted by our Read Write Inc lead - Mrs Wye



LOST PROPERTY

Please can you check the lost property box, which is just inside the door to reception from the playground. There are lots of homeless items, such as jumpers, cardigans, lunch boxes and drinks bottles. Please remember to put your child's name on their property to help us return items to their owner.

Thank you!



Foundation Stage parent workshop

Miss Batten will be sharing how we teach early Reading, Writing and Maths and how you can further support your children at home.

Thursday 27th January 1pm-2pm via Teams.
Link to the meeting will be shared via Parentpay and Tapestry.

Bikes and scooters

If your child rides a bike or scooter to school, please store them in the bike shelter. We recommend that children use a bike lock and wear a bike helmet to help promote and prioritize safety. For drivers, please take extra care around the school entrances so that the children riding bikes and scooters are given adequate time to cross the roads.

Thank you for support in this matter.



Nursery Parents Virtual Coffee Morning

~Thursday 27th January at 10am~

You are invited to our virtual coffee morning, where we can chat about topics such as; toilet training, play, sleep, diet and starting school. If you have any specific questions about any of these topics, you are welcome to email me ahead of the morning and I will try my best to have information ready.

Please email to confirm your attendance by Tuesday 25th January so I can send you a virtual invite.

I look forward to meeting you soon,

Claire Wilkinson
Family Support Advisor
c.wilkinson@discoverymat.co.uk
01752 365250

Cuppa with a copper

To Our Local Community

We would like to invite you to join us and have a chat with us about what's brewing in your area. We are part of your community and want to know what matters to you to see if we can help.



Come join us

- TUESDAY 25th JANUARY 2022 BETWEEN 1-3pm
- WOLSELEY HUB, NEXT TO THE CO-OP



Non Emergency - dc.police.uk/contact

If a crime has already happened or to give information about the crime



WebChat

dc.police.uk/webchat



Report crime online

dc.police.uk/reportcrime



101

Non-emergency



999 Emergency

When life is threatened, people are injured, offenders are nearby or immediate action is required



Keyham Community Policing Team
Email: keyhamcommunitypolicingteam@dc.police.uk
Twitter: @KCPTPlymouth

Craft Club



In craft club after school we have been using our creativity skills to create our own hand puppets. We used a running stitch to sew them and when things went wrong we used our flexibility skills to try again. As you can see they look fantastic!



JOB VACANCIES

Discovery Multi Academy Trust
2 x Permanent Mealtime Assistants
Grade A, Scale Point 1, £9.50ph
7.5hours per week, 38 weeks per annum,

We have a permanent MTA post available to start as soon as possible. This position will initially to be based at Oakwood Primary Academy, but the successful candidate may be deployed to work at any of the schools that form Discovery MAT, where required.

We are looking to appoint a Mealtime Assistant to work within our Trust who –

- can work as part of a successful team
- is able to organise play activities
- is enthusiastic and patient
- has a range of behaviour strategies
- has a good sense of humour

For an application form please visit our website – www.discoverymat.co.uk
Applications should be returned by email to
oakwood.office@discoverymat.co.uk

Closing date: Monday 31st January 2022
Interviews: Friday 4th February 2022

Discovery Multi Academy Trust is committed to safeguarding and promoting the welfare of children and we expect all staff to share this commitment. This post is exempt from the Rehabilitation of Offenders Act 1974; pre-employment checks will be carried out, references will be sought for all shortlisted candidates and all shortlisted candidates will be requested to complete a questionnaire about any convictions or adult cautions that are unspent. Guidance will be given to those shortlisted.

DONATIONS PLEASE

Picasso class are studying the Anglo Saxon's and need donations of clean pillowcases/sheets/t-shirts etc. that are PLAIN WHITE . They're then going to design an outfit, dye it using vegetable dye and make their own traditional clothes. They'd be very grateful if you could please help!

Thank you.



Current Covid-19 Restrictions

While the infection rate across the city remains high, we have measures in place to continue to support our school community. We are continuing to limit entry into school and ask all parents and carers to remain outside of the building unless attending for pre-arranged meetings. **Face coverings must be worn** (unless medically exempt) and hand sanitizer used if you are entering the building. Please ring through to the main reception if you need to leave a message or have a question. We will then answer and deal with your query. Please leave a message on the answer phone with your child's name and class if there is no answer. If your child is late and you are dropping them at Reception, please wait **outside** the sliding doors (with your mask) and a member of our Admin team will sign in your child and let them into the school building.

New guidance from Government regarding COVID 19 (from MAT update from 13.1.22)

From 11 January in England, people who receive **positive lateral flow device (LFD) test** results for coronavirus (COVID-19) will be **required to self-isolate immediately and won't be required to take a confirmatory PCR test**. This is a temporary measure while COVID-19 rates remain high across the UK.

Lateral flow tests are taken by people who do not have COVID-19 symptoms. Anyone who develops 1 of the 3 main COVID-19 symptoms should stay at home and self-isolate and take a PCR test. They must self-isolate if they get a positive test result, even if they have had a recent negative lateral flow test – these rules have not changed.

From Monday 17th January in England, isolation periods for those who have tested positive will change:

Individuals now need to isolate for a full five days and may now take tests from **day 5 and day 6 of their self-isolation period (if they are well)**. Those who receive two negative test results (LFD) are no longer required to complete 10 days of self-isolation but can leave isolation from the start of day 6. The first test must be taken no earlier than day 5 of the isolation period and tests must be taken at **least 24hrs apart**.

